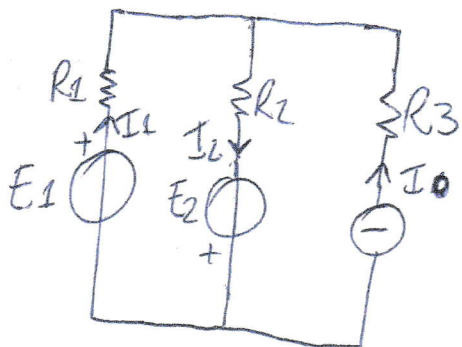


RISOLVERE LA RETE CON IL METODO DELLA SOVRAPPOSIZIONE
DEGLI EFFETTI:



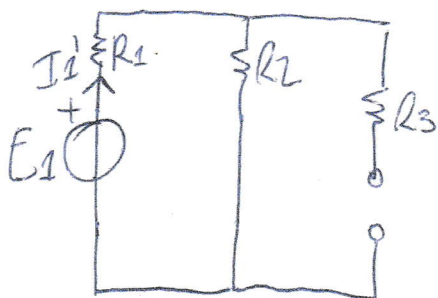
$$E_1 = 12V$$

$$E_2 = 6V$$

$$I_0 = 0,5A$$

$$R_1 = R_2 = R_3 = 10\Omega$$

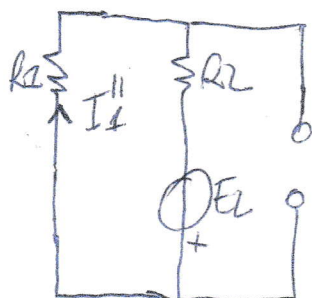
EFFETTO 1:



$$I_1' = \frac{E_1}{R_1 + R_2} = \frac{12}{10 + 10} = 0,6A$$

$$I_1' = I_2'$$

EFFETTO 2:



$$I_2'' = I_1'' = \frac{E_2}{R_1 + R_2} = \frac{6}{10 + 10} = 0,3A$$